

APPRENTICE SCHOOL

The NECA/IBEW Electrical Training Center (NIETC) was no overnight success story. It took eight decades to make it the most technologically advanced facility for electrical apprenticeship training and journeyman continuing education in the nation.

NIETC has its roots in Portland's construction boom in the Roaring Twenties. In March 1929, IBEW Local 48 and the Oregon Electrical Contractors Association collaborated with Portland Public Schools to open the first Apprentice School. George Pettingell taught 18 apprentices in Stephens School on SE Seventh Street.

The school barely survived the Depression. However, enrollment soared with the wartime demand for shipyard electricians.

In 1946, IBEW Local 48 sent Apprentice School instructors to electronics courses at Marquette University in Milwaukee, WI. The school had 102 apprentices (86 vets); 23 journeyman; and 760 others in continuing education.

The school moved into Benson High School in the 1950s, but room and state funding ran out. In 1963, NECA/IBEW created Metro Joint Apprenticeship and Training Committee (JATC) and hired Dan Faddis as training director. The high tech construction demand of the 1970s prompted NECA/IBEW to acquire a 15,000 square foot former Safeway grocery in northeast Portland to serve as JATC's Metro Training Center.

During the 1980s and 1990s, the NECA/IBEW partnership recruited women and minorities with the B-Fit Program at Portland Community College. Dan Faddis's successors, Ken Fry in 1993, and Rod Belisle in 2009, continued his pursuit of diversity. By 1998, Metro JATC participants were 10.7% minorities, and 11.0% female.

The Internet Age prompted NECA/IBEW to expand the program again. In 1998, they built a \$6 million Electrical Training Center at 16021 NE Airport Way to educate apprentices and journeyman, and conduct research & development in alternative energy, net-zero and LEED certified green building, electric vehicle recharging, and advanced computer and telecommunications installation.



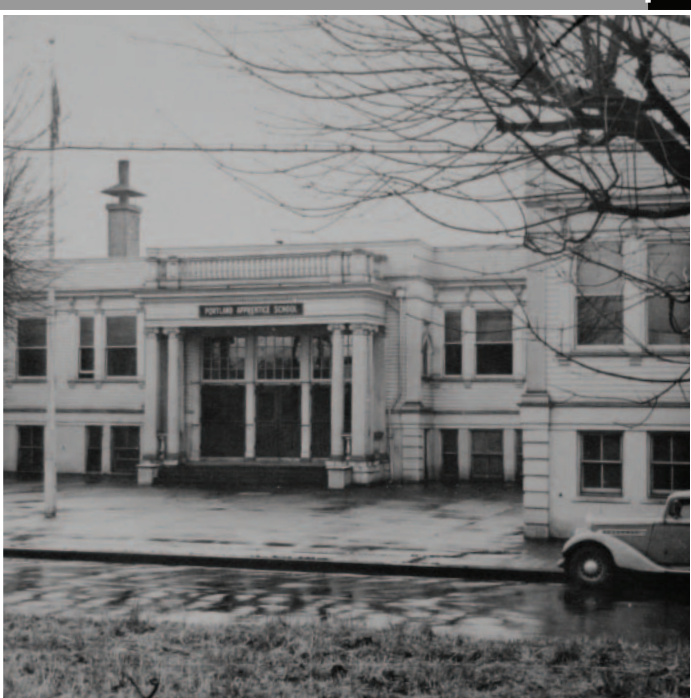
1942



2013



Stephens School
1929-1938



Portland Apprentice School
Beech Street 1940-1955



Benson High School
1955-1978



Metro Training Center
1978-1998



NECA/IBEW Electrical Training Center
1998-Present

